

8-93
8-195



BENCHMADE

BENCHMADE PRESENTS—

Quality & Pride

Our constant goal at Benchmade is to offer exciting, dependable, American-made cutlery that combines the best in American design with the finest materials available. Each of our world-class products represents the very best value in today's market.

Everyone at Benchmade contributes to our product line—thus we're able to control our quality. We're proud of our accomplishments. We manufacture every knife in our factory in Clackamas, Oregon, just a few minutes southeast of Portland.

Hard work, the finest materials, good hands, and a knife lover's heart make the difference. See for yourself!

NEW for 1993!

The most recent and innovative locking system developed for a one-hand opening knife has to be the locking liner. This very functional and extremely secure system has been perfected by Benchmade Knife Company.

The latest addition to our family of fine folding knives featuring this locking design is the **LEOPARD** (model 625), a classic design by Mr. Pat Crawford. This high-style folder joins the **COMBAT TALON II** (model 600), Mr. Walter Brend's award-winning paramilitary contribution to our line. The Leopard and Combat Talon II models feature 6061 T-6 Hard Coat anodized aluminum handle slabs and micro-screw construction, which encase the locking system. These two knives feature ATS-34 blade steel, silky smooth operation, and custom-made quality at affordable prices.

Together with the **PANTHER** series, these knives are provided with a pocket clip for convenient access (see inset at right).

Knives marked with * are new for 1993!



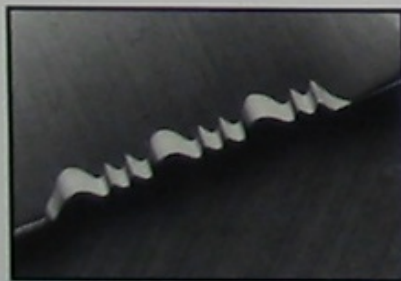
*Pat Crawford
Designed
Leopard #625

Walter Brend #600
Combat Talon II

*Panther #400
Drop Point Utility Blade

*Panther #401
Weehawk Style Blade

*Panther #405
Clip Point Blade



ComboEdge serrations make cutting through tough objects easy without ruining the main cutting edge! Available on all knives except the Brend, Custom Bali-Song®, and the Delta Raider. S-suffix on knife designates ComboEdge serrated edge.

The Leopard #625

Extremely comfortable to hold, this custom classic is 8.5" overall length, 4.75" closed, and weighs 3.6 oz.

The #600 Walter Brend Combat Talon II Knife

Fighting Knife magazine chose Walter Brend's exceptional design of this knife as the "Best Combat Folder" of the Year in 1991! The **COMBAT TALON II** features the reverse curve shape of Walter's No. 2 combat knife. 8.125" overall length, 4.56" closed, and weighs 3.9 oz.

The Panther— Available in Three Versions

Our **PANTHER** series (Models 400, 401, 405) encompasses all the technological advances gained from our R & D in the Custom series. Packaged in a more compact design, the Panther features a rock solid, silky-smooth, one-hand operation locking liner system combined with twin internal stainless steel liners encased in a tough Zytel glass-reinforced nylon one-piece handle. Blade opening is quick with a convenient opening "thumb" stud. The Panther series knives are 7.625" overall length, 4.375" closed, and weigh 2.8 oz.



Custom Bali-Song®

"The World's Strongest Folding Knife"

From the very beginning, our **CUSTOM BALI-SONG®** knife has been known as The World's Strongest Folding Knife. Over the years we have constantly strived for excellence. All Custom Bali-Song® knives feature custom hand-ground blades, our proven and highly reliable three-point locking system, and either fully skeletonized handles or handles featuring panels of inlay material of your choice.

We have continued to successfully blend the functional elements of design, balance, performance, and the highest levels of craftsmanship into these timeless classics. To aggressively push the envelope of quality and performance across our entire product line, we have invested in CNC machine tools and other highly specialized knife manufacturing equipment. With the procurement of such technology, we now offer in our Custom Bali-Song® line optional Titanium handles and premium-grade ATS-34 stainless steel blade material. We will soon offer our 6" model series. Call for further information.

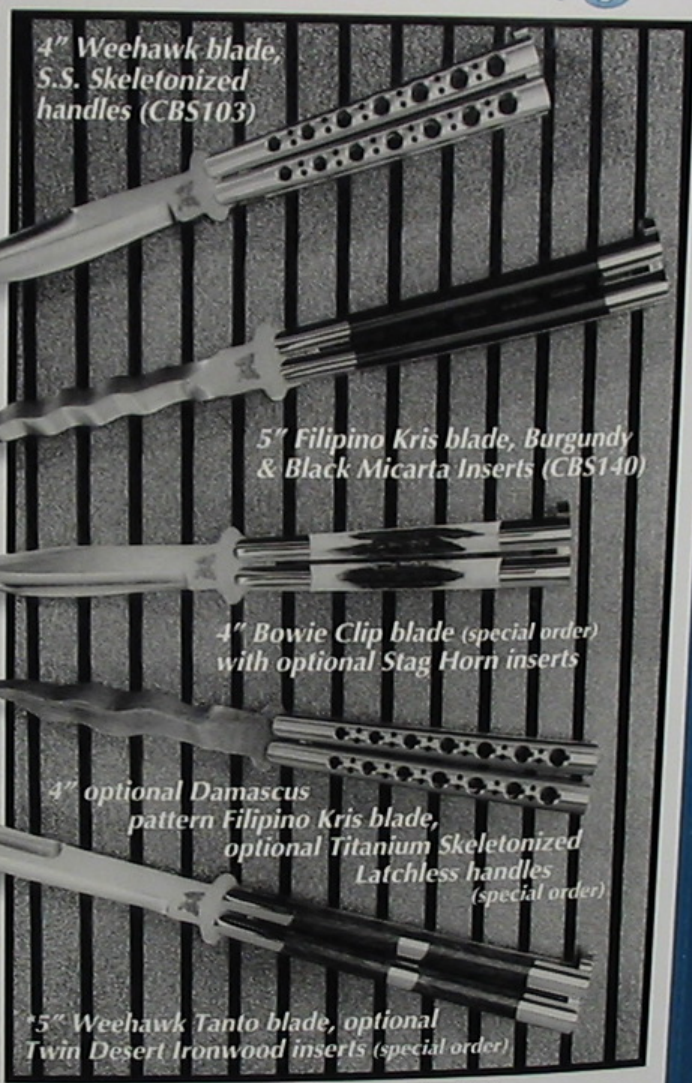
Still the Best... Still Hand Made

Our Custom Bali-Song® knives are still the best because they are hand-made by people who respect quality. Using the finest equipment available, our skilled craftsmen labor over each Custom knife. Each blade is carefully custom hand-ground to order; each handle is carefully fitted and polished. These finer points of fit, finish and function come only from such careful attention to detail. This is why custom knife-makers continue to refer their customers who want a Custom Bali-Song® to us, rather than attempt the laborious task themselves.

The choice of blade shapes and lengths, handle insert materials and handle materials available is simply staggering, but all Custom Bali-Song® knives offer:

- Patented integral handles machined from solid 303S cold rolled stainless steel.
- Completely hand ground satin-finish ATS-34 stainless steel blade, $\frac{3}{16}$ " thick, heat treated to a Rockwell hardness of 59-61 on the C scale.
- Benchmade's three-point locking system that incorporates two fully machined stainless steel pivot pins and tang pin.
- Special inlay materials— Micarta, exotic hardwoods and other natural materials— or if preferred, the skeletonized handle.

Please refer to our latest price list for complete specifications and ordering information, or call our (800) hot line for the latest on what's available. Allow at least six weeks for delivery— our Custom Bali-Songs® are special made to order and it takes time to do it right!



4" Weehawk blade,
S.S. Skeletonized
handles (CBS103)

5" Filipino Kris blade, Burgundy
& Black Micarta Inserts (CBS140)

4" Bowie Clip blade (special order)
with optional Stag Horn inserts

4" optional Damascus
pattern Filipino Kris blade,
optional Titanium Skeletonized
Latchless handles
(special order)

5" Weehawk Tanto blade, optional
Twin Desert Ironwood inserts (special order)

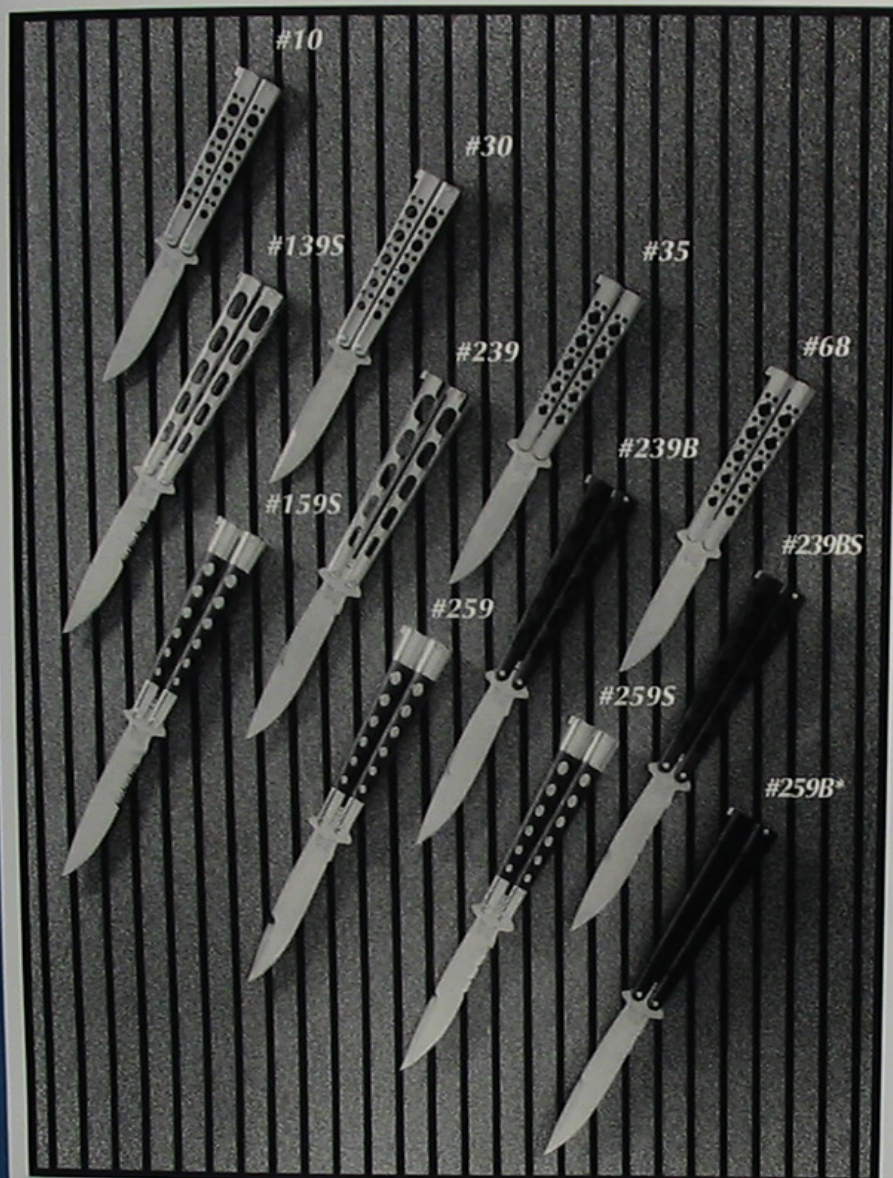
Knives marked with * are new for 1993!

BLADE SHAPES AVAILABLE
(ONLY AVAILABLE IN CUSTOM KNIVES)

 IADA HIGH HOLLOW	 MODIFIED SPEARPOINT	 SCIMITAR	 BOWIE CLIP	 WEEHAWK
 SPEARPOINT	 FILIPINO KRIS	 WEEHAWK TANTO	 SPANISH BOWIE	 TANTO

Ber
Mod
Sand
invest
Mod
Uddeh
9.25"
Mod
Uddeh
with bl
All Ben

PRODUCTION BALI-SONGS®



Benchmade Production Bali-Song® Specifications:

Models 10, 30, 35, 68 (S indicates serrated edge)

Sandvik stainless steel blade treated to 57-59 Rockwell C hardness; Handles are 17-4 PH investment cast stainless steel. 7.5" overall length; 4.375" closed; weight 4.8 oz.

Models 139, 239 (S indicates serrated edge, B indicates black powder-coat Zamak handles)

Uddeholm stainless steel blade treated to 57-59 Rockwell C hardness; Zamak die-cast handles. 9.25" overall length; 5.25" closed; weight 5.3 oz.

Models 159, 259 (S indicates serrated edge, B indicates black powder-coat Zamak handles)

Uddeholm stainless steel blade treated to 57-59 Rockwell C hardness; Zamak die-cast handles with black insert panels. 9.25" overall length; 5.25" closed; weight 6.8 oz.

All Benchmade production Bali-Songs® utilize the superior 3-point locking system.

Knives marked with * are new for 1993!

OUR ORIGINALS...

Benchmade **Production BALI-SONG®** butterfly knives offer all of the outstanding strength and functionality our products are known for. Using production methods that ensure the highest consistency and quality at affordable prices, we present the widest product line of U.S.A. factory-made butterfly knives.

3" Blade, Stainless Steel Skeletonized Handles

These models have become classics. Our 3" blade Models **10, 30, 35** and **68** feature 17-4PH stainless steel investment cast handles with our classic skeletonized hole pattern and 3" Swedish steel mirror-polished blades. Choice of a single-edge Utility or Weehawk style blade shape, and with plain edge or our ComboEdge partial serration.

Handles available either in a standard finish (rivets exposed) or a deluxe grade finish (blended rivet heads and chamfered large holes). Consult our latest price list for complete ordering information.

4" Blade, ZAMAK Diecast Handles

For those who prefer a longer blade with more style options, we present our 4" Zamak handled line. These knives are available in a combination of Utility or Weehawk style blade shapes; techno-styled skeletonized slot patterns or with a more traditional insert pattern handle; bright nickel-plate or a black non-reflective finish, and with plain edge or with our ComboEdge serration. We have illustrated only a few knives here. For your personal choice, please consult our latest price list for complete ordering information.

BY THE ORIGINAL...

Benchmade Knife Company was founded by craftsmen committed to making modern, high performance, well-conceived knife designs in the U.S.A., unmatched in precision, function and value.

We take a no-nonsense approach refusing to include unnecessary bells, whistles or bottle openers that impair the full cutting performance of our knives. We are serious knife makers who produce for the modern knife user.

If you have a need for a particular knife for a special purpose, call us.

MONARCH LIGHTWEIGHT TACTICAL FOLDER & THE GAMESMAN

The **MONARCH LTH 501** and **501S** knives feature the "High Speed, Low Drag" classic lock-back design with a drop point skinner blade and false edge made of Swedish stainless (the **501S** features the ComboEdge serration) hardened to 57-59 Rockwell C. This high performance blade is coupled to a Zytel fiber-reinforced nylon inter-frame handle that is strong and lightweight. Checkered Kraton inserts provide a comfortable, secure, non-slip grip. The Monarch has a heavy duty lock spring and an opening disk instead of a thumb lug. The unique opening disk works well with this size of knife by providing increased mechanical advantage and ambidextrous operation.

Due to popular demand, we now offer the **MONARCH LTH** in a single-edge, utility pattern without the opening disk (Models **500**, **500S**).

After field testing many skinning blade shapes over the past few hunting seasons, we proudly offer our hands-down favorite—the **MONARCH GAMESMAN**—that has consistently proven to be a work-saving tool. This efficiently designed skinner blade combines razor-sharp edge geometry with a broad shape providing fine fingertip control. In cold, wet, miserable weather, we could cut, slice, scrape, peel and cape with complete confidence. This hard working blade shape makes the most of the non-slip Kraton inter-frame design. Slim, light, strong, sharp—the Gamesman is truly THE trail tool! Without opening disk feature Model **505**, **505S**; with opening disk, Model **507**, **507S**.

Monarchs are 8.5" overall length, 4.875" closed and weigh 3.2 oz. Nylon belt sheath included with all models.

***Monarch Utility Field Blade**

Weehawk Style Blade With Thumb Opening Disk

***Gamesman Skinning Blade**

***Gamesman Skinning Blade With Thumb Opening Disk**

Knives marked with * are new for 1993!

DELTA RAIDER™ Model 120 Tactical Field Knife

Our efficient S-curve cutting edge is widely acknowledged as the most exciting modern blade design on the market. We have perfected this concept and offer you our **DELTA RAIDER**.

The S-curve cutting design provides more cutting action and effective edge length than other knives of the same size. Our exclusive double grind reduces weight without sacrificing integrity—the Delta Raider will withstand the harshest conditions found in the field.

Pick it up, it feels right. The contoured Kraton handle is more durable and makes this knife even more tactilely responsive. The Delta Raider is perfectly balanced, properly sized and precisely made. Black leather sheath included.

BLADE

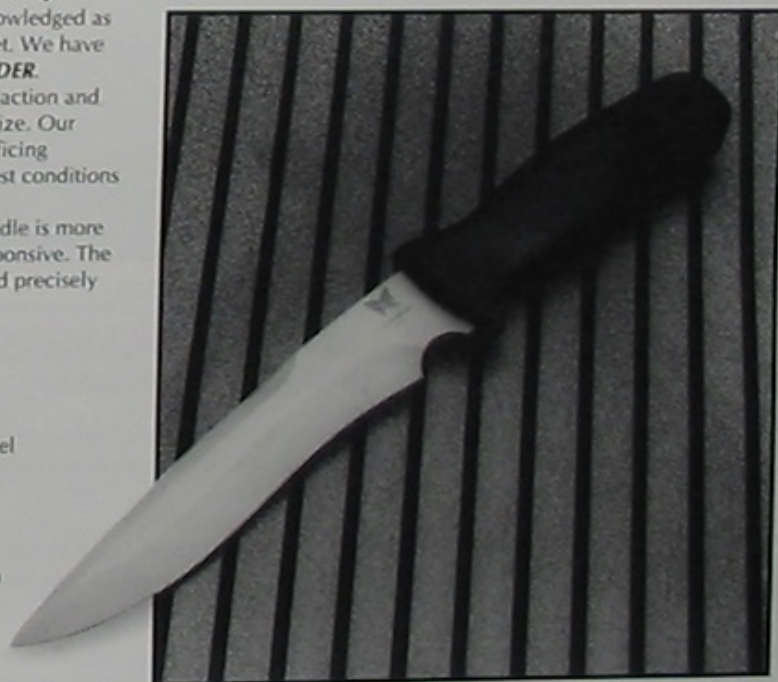
LENGTH	7"
FINISH	Satin Finish
MATERIAL	Special high carbon stainless steel
HARDNESS	57-59 R.C., Rockwell

OVERALL LENGTH 10"

HANDLE Contoured black textured Kraton

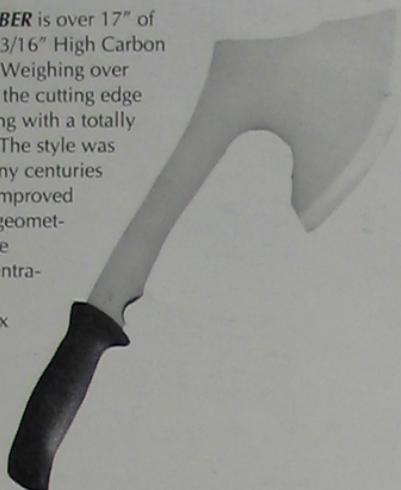
WEIGHT 10 oz.

WARRANTY Limited lifetime



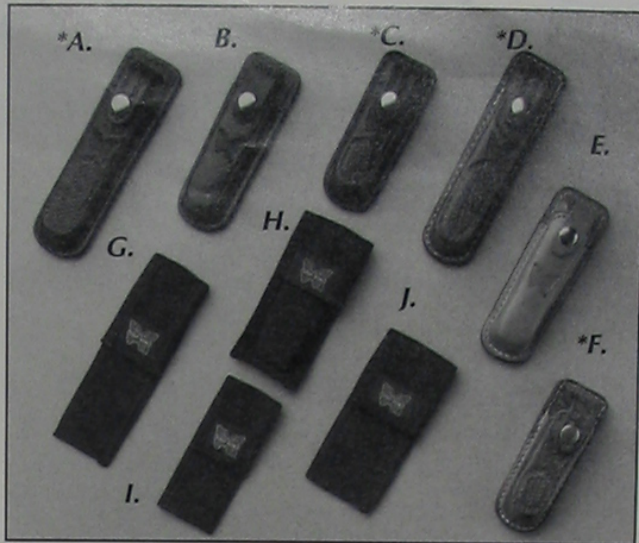
Jody Samson's AXCALIBER™

The **AXCALIBER** is over 17" of hard cutting 3/16" High Carbon Spring steel. Weighing over two pounds, the cutting edge is over 8" long with a totally usable face. The style was invented many centuries ago—Jody improved it! Balance, geometric work edge angle, concentration of mass behind the ax edge, and a comfortable shock-absorbing handle merge together in this powerhouse.



Axcaliber Specifications

HARDNESS	54 R.C., Rockwell
HANDLE	Contoured black textured Kraton
WEIGHT	32.5 oz.
SHEATH	Premium black leather



KNIFE CASES

A knife, like any working tool, needs to be protected when not in use, but ready to use easily when the need demands it. Benchmade offers two types of knife cases—traditional leather or nylon. Leather cases are made of top quality steer-hide and are offered in natural color or black, with or without basket-weave pattern. Heavy-duty snap secures flap. Nylon cases utilize a velcro-style flap to secure the knife. All cases have a belt loop. When ordering, specify the type and style Benchmade knife being protected, and whether you desire leather or nylon. Some knife case styles only available in nylon.

Cases A-F are Leather, G-J are Nylon. Model Numbers—(*A) #L5C, black, basketweave; (B) #L4C, black, smooth; (*C) #L3C, black, basketweave; (*D) #L5C, brown, basketweave; (E) #L4C, brown, smooth; (*F) #L3C, brown, basketweave; (G) #CO5; (H) #PO4; (I) #CO3; (J) #CO4. * INDICATES NEW FOR 1993!

Benchmade Knife Company, U.S.A. Warranty

LIMITED WARRANTY

This knife is warranted to the original purchaser for a period of two years from the date of purchase against defects in materials and workmanship and is not transferable. Call 800-800-7427 for details.

WHAT IS COVERED: Replacement parts and labor.

WHAT IS NOT COVERED: Normal wear, or shipping costs for defective item. Damage caused by abuse or failure to perform normal maintenance. Consequential damages, incidental damages or incidental expenses, including damage to property. Some states do not allow the exclusion or limitation or incidental or consequential damages, so the above limitation or exclusion may not apply.

LIFE SHARP GUARANTEE

Benchmade Knife Company will, for the life of your knife's original blade, re-sharpen it to a razor sharp factory edge at no charge. Just return your knife postpaid, with your name, address, telephone number and \$5⁰⁰ to cover the cost of return shipping and handling to: Benchmade Knife Company, 15875-G S.E. 114th St., Clackamas, OR 97015.

IMPLIED WARRANTY

Any implied warranty, implied warranties of merchantability and fitness for a particular purpose is limited in duration to two years after original retail purchase.

Some states do not allow limitation on how long an implied warranty lasts, so the above limitation may not apply to you.

To the extent any provision of this warranty is prohibited by federal, state or municipal law, and cannot be pre-empted, it shall be applicable. This warranty gives you specific legal rights and you may also have other rights which may vary.

BENCHMADE

Benchmade Knife Company, U.S.A.
15875-G S.E. 114th Street
Clackamas, OR 97015